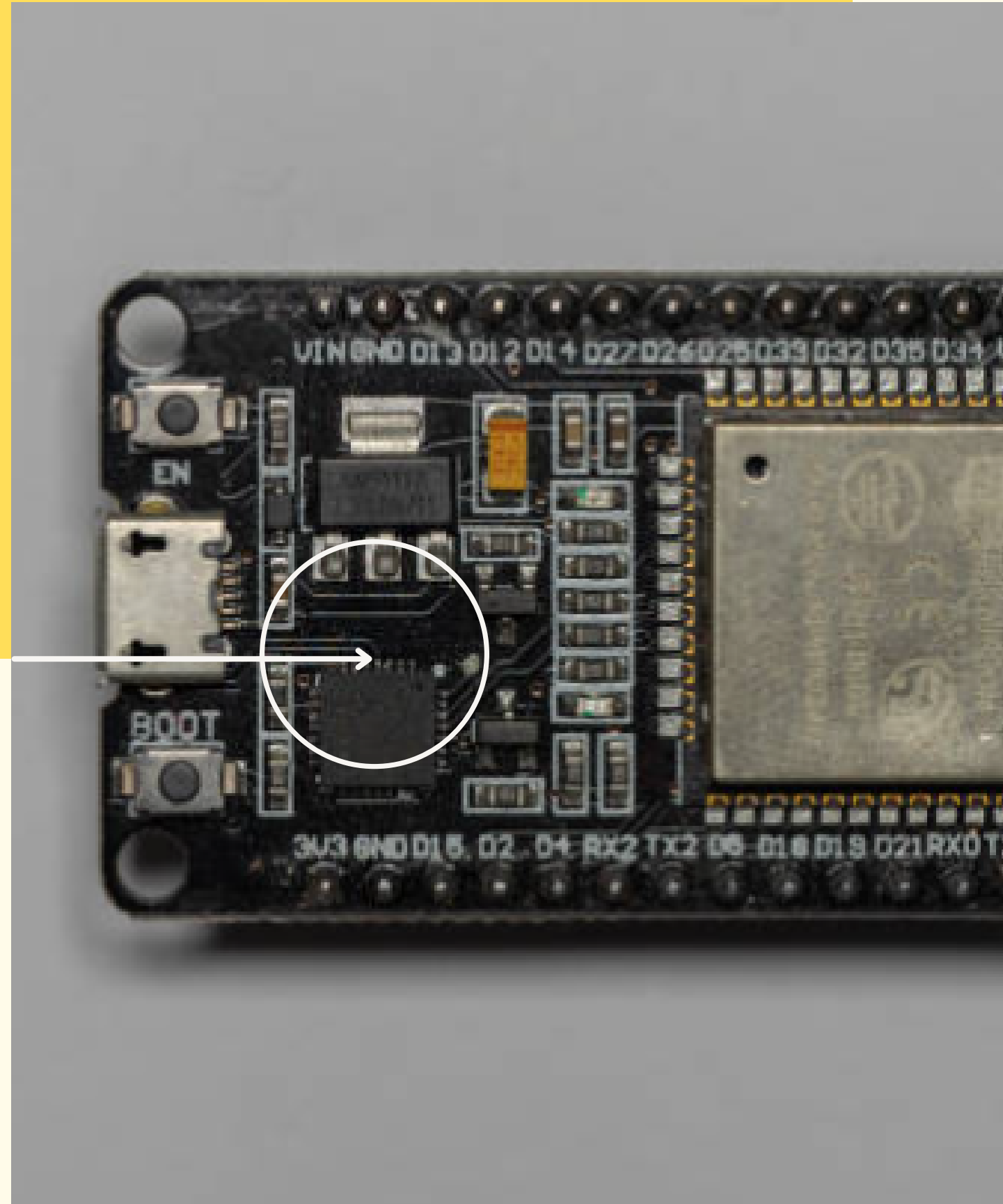


USING ESP32 AND HOME ASSISTANT

Automated plant watering system



About the Project

The Systems senses the water mositer present in the soils and supplies water wherever needed.

This project is developed for home automation for people in a busy life style, The device automatically measures water level from 16(Max) different location and can operate 16 different water supply, without any human interference.



Part used in this Project

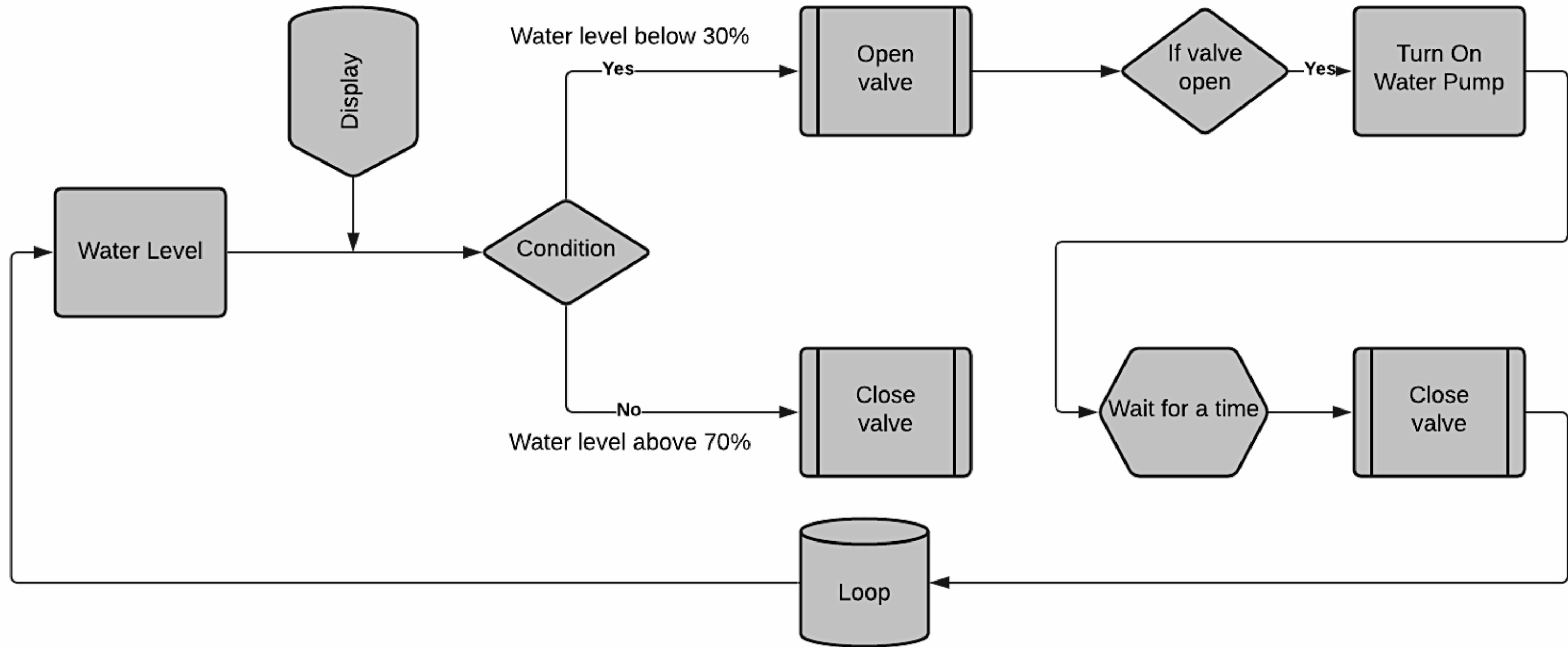
EQUIPMENT	QUANTITY
Esp32(NODEMCU)	2
Relay Module(8)	1
Multiplexer(16*1)	1
Analog to digital converter	1
WATER LEVEL SENSOR	6

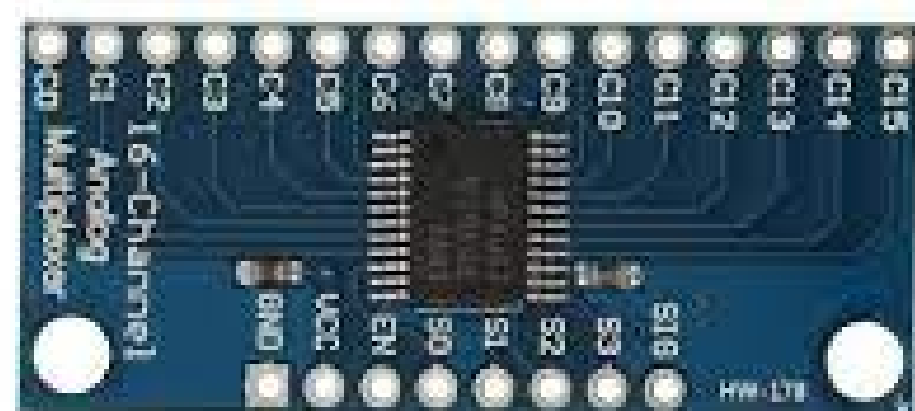
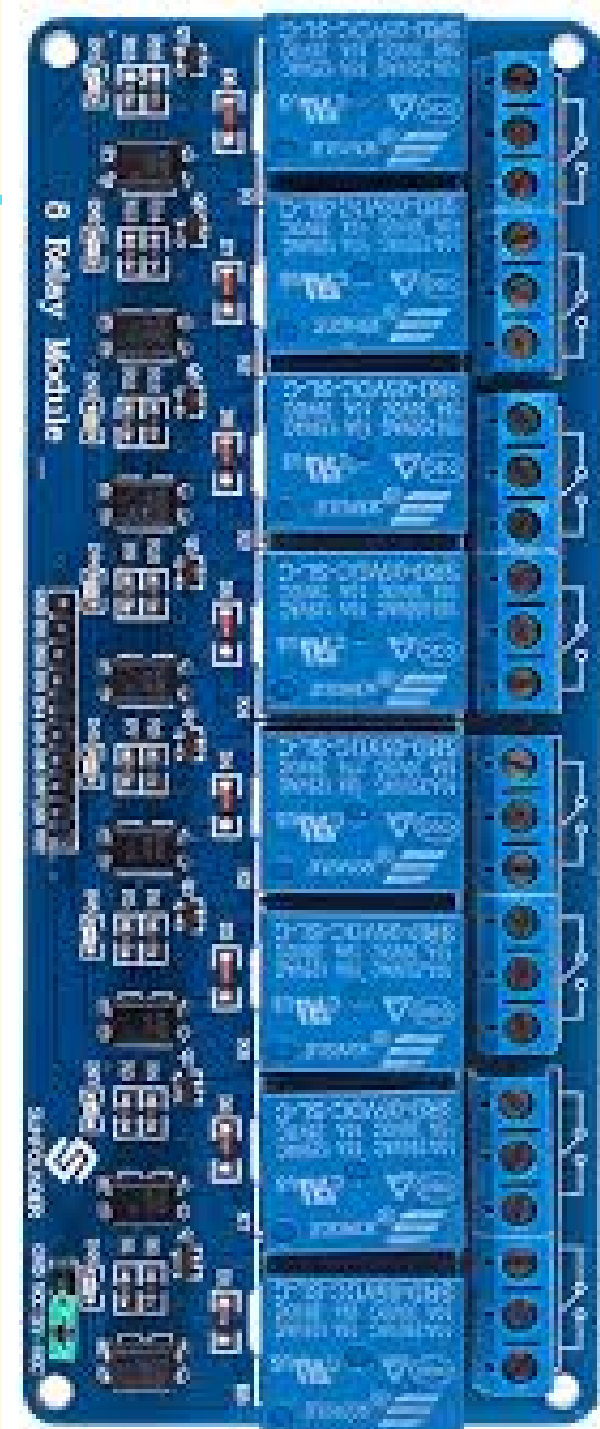
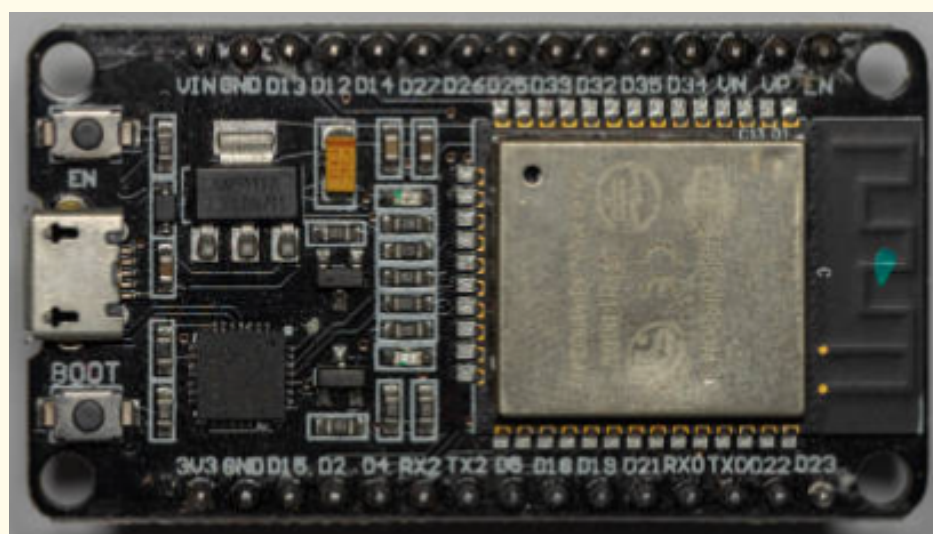
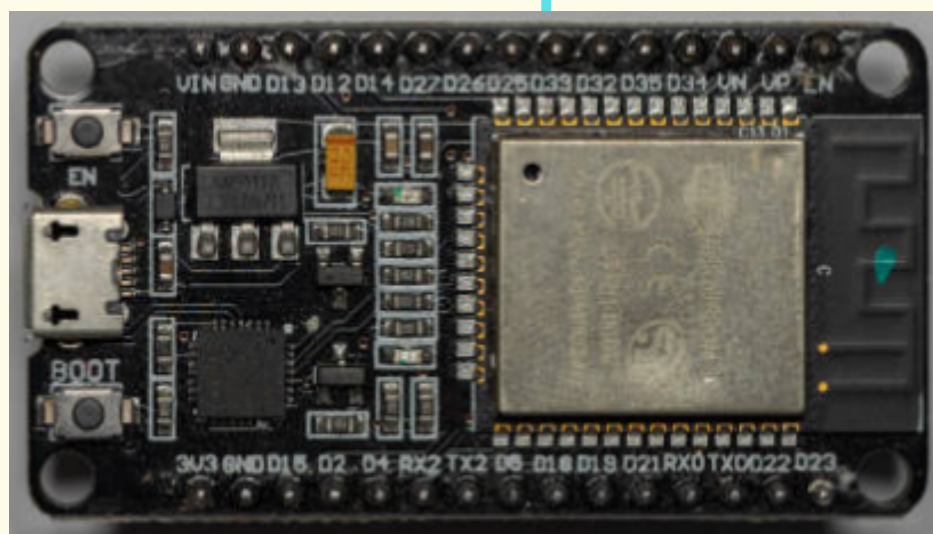
EQUIPMENT	QUANTITY
Solenoid Valve	6
24V water pump	1
5V Power supply	2
24V Power supply	1

TOTAL COST :

3,500 INR

Working Principle







Project Goals

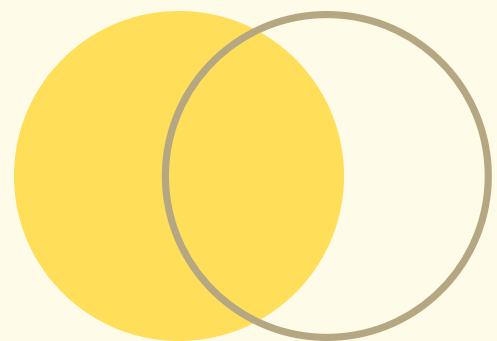
- ✓ Home Made Automated System
- ✓ Automation of daily Home activities
- ✓ Cost Effective and Easy to Construct
- ✓ Understanding ESP-32 Microcontroller & Home Assistant
- ✓ Understanding Sensors taught in Control System in Last Semester.

MUNJAL NAYAK

Team Lead



VAIBHAV SINGH



**Creative
Team**

Thank you!